



# TRANSFORMING SPACES

OUR CLIENT CONTACTED US AFTER SEEING OUR ARTICLE IN ISSUE 60, FEBRUARY/MARCH '09 OF THIS MAGAZINE ABOUT A RENOVATION WE DID IN CASTLEBAR. IT WAS OUR CLIENTS WISH TO BREATHE NEW LIFE INTO THEIR HOME. THEY WANTED TO BRING LIGHT INTO THE HOUSE, ALONG WITH SOME CRUCIAL CHANGES TO SPATIAL PLANNING AND AN EXTENSION TO THEIR LIVING SPACE.

WORDS BY GRAINNE HULL O' NEILL PHOTOGRAPHY BY ALAN SMYTH





**W**e set to work on a variety of plans and layouts with which to liaise with our clients. On gaining their feedback and satisfaction, work started on the project and began to take shape. The pictures illustrate the transformation that took place.

The entrance hall to the house was completely redesigned to make more use of space and to introduce contemporary design details. We redesigned the stairs and included all new skirting, woodwork and doors, along with supreme new finishes to create a classical feel.

Off the entrance hall is a transformed sitting room. We removed a cumbersome arch to create a larger seating area, leading seamlessly into a newly designed extension to the property housing a formal dining area desired by our clients. The new extension features high ceilings with large picture windows looking out on to the garden. Folding glass doors between the sitting room and the dining room create a distinction between the two spaces as and when required. The classical feel continues through these spaces, as evidenced by the colour schemes we put together along with the fabrics and soft furnishings.

Also on the ground floor, we redesigned the family room. In order to introduce more light into the room, we opened the space through to the kitchen incorporating a large set of concealed glass sliding doors. This lends versatility to the spaces, yet, when the spaces are distinct, light still pours through. The finishes add a contemporary twist to the largely classical style of the interior.





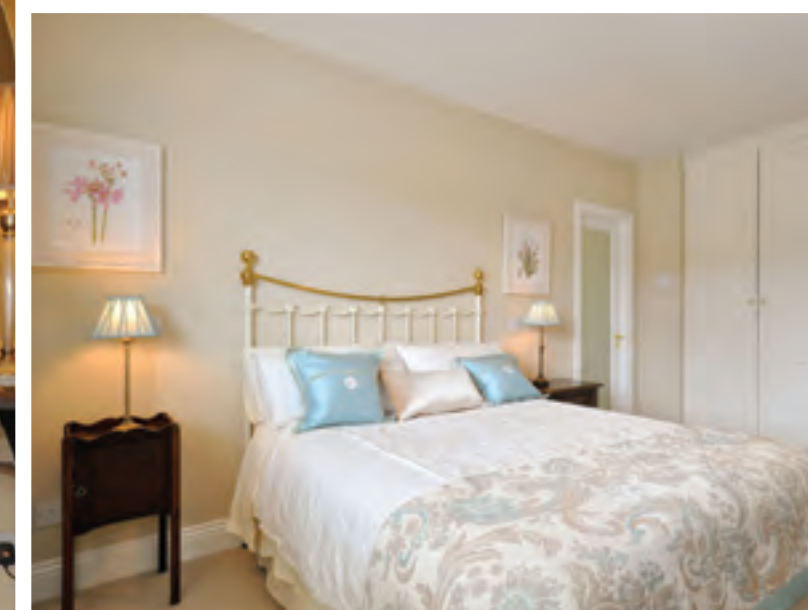






Not only downstairs, but upstairs was transformed too! We took an annexed storage space and created an en-suite and a walk-in wardrobe for the master bedroom of the property. This is accessed via an opaque glass door. We also re-designed the main bathroom, while adding an extra en-suite for a guest bedroom. This has created a luxury feel to the property, with finishes to match.

The pictures included here will hopefully show what can be done with a space when an expert is consulted. Our clients were hoping to find a new style of living without having to change their location. It was a joy to work with them on realising their hopes – and this project has been a tribute to augmenting the love that you have for the place that you live in.



### Get the look...

- Interior Designer:**  
Architectural Spaces Interior & Spatial Design Consultants. Tel: 091 533800
- Main Contractor/Builder:** Aidan Coyne
- Stairs:** Designed by Architectural Spaces  
Manufactured by Loughnanes Joinery
- Skirting:** Designed by Architectural Spaces  
Architrave & Doors Tel: 091 533800
- Timber Floors:** Woodplus
- Feature Pendant Light:**  
Peter Murphy Lighting
- Curtains:** Irwins
- Furniture:** Mc Dermotts
- Carpets:** Mc Dermotts
- Marble & Ceramic Tiles:**  
Crane/Ceramic City
- Photographs:** Alan Smyth 087 607 395